

NEA ROAD TO SK17

Battle Management System (BMS) Training

Over the past few months the NEA User Centre Training Team has been working hard to design, develop and deliver training for the new SitaWare Battle Management Suite.

Having a digital battle management system (BMS) enables commanders at all levels to share, collaborate and synchronise plans and operations thus enhancing the speed of command and mission effectiveness.

SitaWare HQ was previously a central hub of the NZ Army Tactical Area Network Environment (TANE) after initially being used as part of a NZ Army C2 Battlelab.

It has now been developed into a full BMS capability, which highlights a significant upgrade for NZ Army from just operating SitaWare HQ to now a fully tailored SitaWare Suite (Version 6.5), which will enable C2 from a Joint HQ environment down to a dismounted commander operating at the tactical edge.

The training team has been focused on designing the training for Task Group (TG) Level operations, to enable Army personnel to use the BMS on Exercise Southern Katipo (SK17). The training will initially train users in the fundamentals of the system, and its requirement for all personnel that operate in a TG HQ Command Post. More advanced training on Plans and Orders and Operations are delivered to personnel who are involved in day-to-day planning and battle management within the Command Post, or who operate at a Task Unit (TU) HQ Level.

The outcome of this training is to give personnel the tools to enhance mission planning efforts and support mission execution, enhancing Situational Awareness for the Commander and their staff.

Task Group Headquarters

- Joint Common Operational Picture in a browser
- Collaborative real-time planning
- Send and receive Reports and Returns
- Multiple intelligence pictures as layers
- Share selected elements of COP with government/NGOs
- Support for most military interoperability standards



Training event in Mission Command Training School

Initial training has been delivered to HQDJTF and the LtTG (2/1 RNZIR Lead) personnel, with ongoing support to their Command Post Exercises. Additionally specific administrator training has been delivered to 1 (NZ) Signal Regiment personnel to adequately support the SitaWare maintenance and system architecture requirements for SK17.

At this stage NEAs training Initial focus as been on delivering the SitaWare HQ function, with Frontline and Edge training being developed and delivered after SK17. This will be supported by the introduction of the new Mission Tactical Command System (MTCS), which will enable a consistent

and coherent Common Operating Picture (COP) from the dismounted commander to the National Joint Headquarters.

What is SitaWare Suite 6.5?

The SitaWare C4I (command, control, communications, computers and intelligence) suite is an off-the-shelf military product developed and maintained by Systematic. It is a BMS that supports operational and tactical staffs in planning and executing operations.

The C4I Landscape

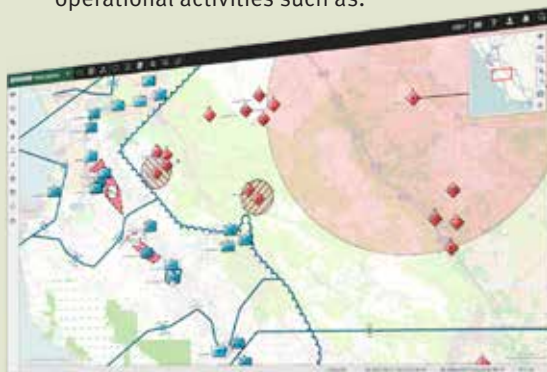


The Benefits of SitaWare

The SitaWare Suite comprises three distinct products, each specifically adapted to the unique operational environment and requirements at different levels of the command chain. The three products are connected together with SitaWare Tactical Communication, unmatched tactical communications connecting disparate tactical subnets into to one network.

1. SitaWare Headquarters

is designed for command and control in a Joint Operations Centre as well as at Division to Battalion level providing coherent and consistent command and control with support for key operational activities such as:



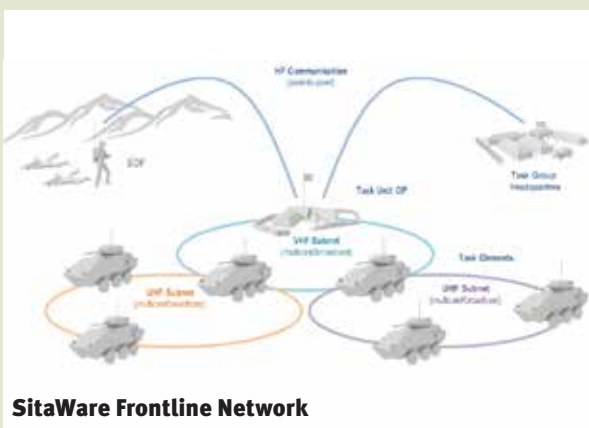
Above: SitaWare Headquarters User Interface

- Situational Awareness for enhanced force protection
- Mission Planning with real-time collaborative planning and digital distribution
- Increased Operational Tempo in Mission Execution
- Mission Reporting, journalisation, and After Action Review with modern browser based user interface with good user experience
- Supports for an Extensive Range of US, NATO and International Interoperability Standards

2. SitaWare Frontline

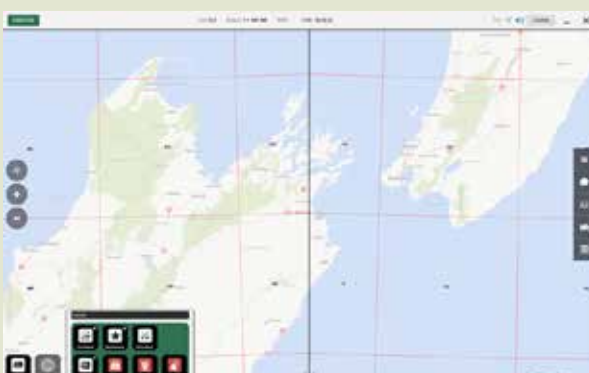
is designed for the commander in the battlefield, primarily at battalion level and below. It is also applicable for the battle group commander at their forward command post (FWCP). SitaWare Frontline features:

- High refresh rates in blue force tracking for enhanced force protection
- Sensor and radio agnostic, works with the radios and sensors already in service



SitaWare Frontline Network

- Simplified installation and maintenance for faster deployment in theatre using less resources
- User mobility unrestrained system, user may transfer between vehicles without reconfiguration



SitaWare Frontline User Interface

SYSTEMATIC
SITAWARE
Headquarters



SitaWare Headquarters in the Tactical Operations Centre can share the situation picture with SitaWare Frontline and SitaWare Edge users and provide friendly force tracks from other coalition forces

SitaWare Tactical Communication is a software component part of all three SitaWare products. It ensures shared situational awareness across the tactical network



SitaWare Frontline is the in-vehicle battle management systems for both mission planning, execution and reporting.



SYSTEMATIC
SITAWARE
Frontline



SYSTEMATIC
SITAWARE
Edge

SitaWare Edge is connected to the PRR or other tactical radio to provide shared situational awareness and the ability to share tactical sketches between members of the tactical network

3. SitaWare Edge

is designed for the dismounted commander at the tactical edge. SitaWare Edge runs on light-weight Android devices and offers dismounted commander updated situational awareness with:

- Friendly Force Tracking for force protection
- Receive plans and orders from CP for fast execution
- Tactical Chat
- Send orders using tactical sketches
- View danger areas and Points of Interest
- Instant spot reports



Where to from here?

The new SitaWare Suite will continue to be rolled out to end users as NEA continuously upgrades existing capability or introduces new capabilities to the land domain. This will see training embedded into existing courses to support user application. Aspirationally it is envisioned that SitaWare will be used as the BMS tool to support daily business as usual tasks and outputs. Watch this space!

<http://orgs/sites/armint/siteFilespageLibrary/NetworkEnabledArmyPage.html>

